

SECTION 9-3

REVIEW AND REINFORCE

Angiosperms

-1

◆ Understanding Main Ideas

93

Answer the following questions in the spaces provided.

1. Name two characteristics of angiosperms.

Gymnosperms allowing them a successful reproduction

2. What do the male parts of the flower produce?
 angiosperm, stamens, carpels, and tiny pollen grains also produce fruits

Flowers have male parts called stamens that produce a sticky powder called pollen

3. What do the female parts of the flower produce?

Flowers also have a female part called pistil. Also eggs or ovals.

4. Briefly describe the process of embryo formation in an angiosperm.

The embryo fertilizes the angiosperm.

5. What is the difference between a monocot and a dicot?

Monocots have one cotyledon and dicots have two.

◆ Building Vocabulary

Fill in the blank with the term that matches the numbered part of the flower in the figure.

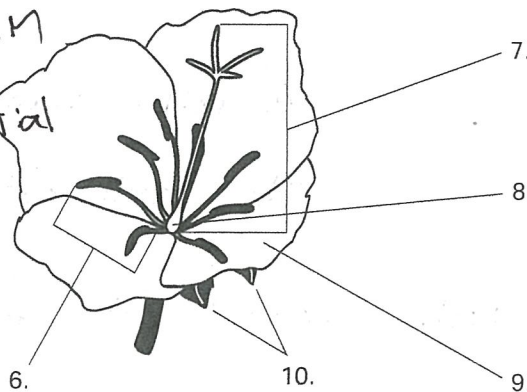
~~7. stigma~~ stamen

7. anther / filament / pistil

8. ovule

9. petal

10. sepal



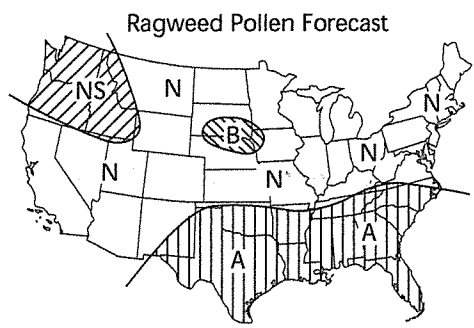
SECTION 9-3

ENRICH

Counting Pollen

Millions of people suffer from allergies when they breathe in air containing certain kinds of pollen. Some people develop allergic reactions similar to cold symptoms, while others have reactions that are even more severe. Pollen counts and pollen forecasts are issued to help people know what to expect from their pollen allergies.

One method used to count pollen is placing a greased microscope slide on the roof of a tall building and leaving it there for a certain amount of time, usually 24 hours. After this time, the slide is examined under a microscope and the various kinds of pollen that have fallen on the slide are counted. Pollen levels under 10 are usually not considered a problem for people with allergies. Levels above 60 can cause mild reactions, and a severe reaction can happen when levels go into the hundreds. A pollen forecast is different from a pollen count because it predicts what the pollen levels will be in the future, while a pollen count tells you the actual conditions on a specific day in the past.



Legend:
 MA = Much above normal
 A = Above normal
 N = Near normal
 B = Below normal
 MB = Much below normal
 NS = No ragweed season

Pollen Count
 Particles/cubic meter of air

Ragweed	77	Mod.
---------	----	------

Ragweed is an angiosperm found in nearly every region of the United States. It is a very hardy plant that likes hot weather. Ragweed plants release their pollen between 6 A.M. and 10 A.M. The figure above is a map showing a ragweed pollen forecast for the fall in the United States. The pollen count is for a specific fall day in a U.S. city.

Study the figures, then answer the following questions on the back of this page or on a separate sheet of paper.

1. What type of reaction could most people allergic to ragweed pollen expect on the day the pollen count was taken? A mild reaction
2. If you suffered from ragweed allergies, in which area of the country would your allergies bother you the least? The northwest
3. According to the map, which area of the country (north, south, east, or west) is forecasted to have the highest levels of ragweed pollen? Why do you think this occurs? The south because it grows best in hot climates
4. If you lived in an area of high ragweed pollen, would it be helpful to keep your windows closed during the mornings? Explain your answer.
Yes because it released between 6 and 10 in morning.

© Prentice-Hall, Inc.